



Flight Plan & Site Survey

Created using **RPAS Wilco**[®]

Reference No:	BBB25A
Title:	FMAC 1nm radius
Pilot Name:	[REDACTED]
Pilot Certificate:	[REDACTED]
Flight Start:	June 20, 2024 11:05 AM
Flight End:	June 20, 2024 1:05 PM
Flight Area (Latitude):	46° 9' 36.15" N (46.16)
Flight Area (Longitude):	66° 34' 31.15" W (-66.575)
Altitude - Radius:	Alt: 1700 ft - Rad: 1852.0 m (1.0 nm)
Classification:	UNCONTROLLED
FIR - Contact:	CZQM - 506-867-7434

Please ensure you received all required authorizations prior to flight.

Disclaimer

This Site Survey was created using RPAS Wilco by AIM Robotics. The flight plan contained is intended only for RPAS flights on the date/time and location specified. The user accepts all responsibility for the accuracy and completeness of the information contained.

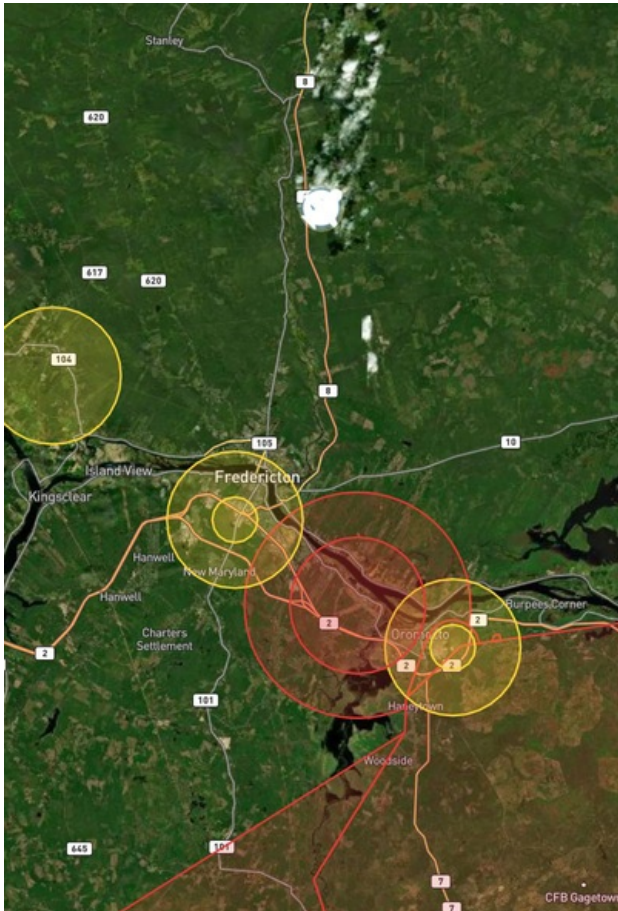
For the complete Terms & Conditions, see

<https://rpaswilco.com/#/tnc>

Included

- Site Survey
- Obstacles (if available)
- Nearby Aerodromes
- Canadian Aviation Regulations
- GFA
- Aerodrome Supplements
 - METAR & TAF (if available)
 - NOTAMS
 - CFS



Flight Map



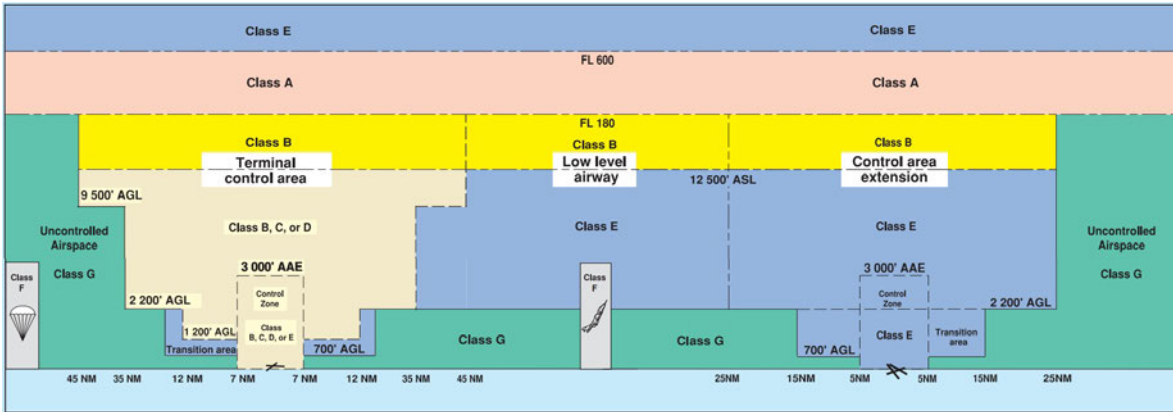
RPAS Specification

- **Manufacturer:**
MAAC
- **Model:**
MODEL AIRPLANE (Thing)
- **Registration Number:**
c000000000
- **Eligible for advanced operations:**
Yes
- **Manufacturer RPAS safety assurance:**
 - **Controlled Airspace:** YES
 - **Near People:** NO
 - **Over People:** NO

MAP Details

	Latitude	Longitude
 MODEL	46° 9' 36.15" N (46.16)	66° 34' 31.15" W (-66.575)
 Pilot Paul Brine	46° 9' 39.75" N (46.161)	66° 34' 34.75" W (-66.5763)

Airspace Classification



Overlying Airspaces

Class	Name	Floor	Ceiling
E	CHARLO, NB CAE	2200AGL	12500MSL
B	CHARLO, NB CAE	12500MSL	18000MSL
E	T735 Airway	2200AGL	12500MSL
B	T735 Airway	12500MSL	18000MSL
E	T698 Airway	2200AGL	12500MSL
B	T698 Airway	12500MSL	18000MSL

Nearest Aerodromes & Distance from Operation

WEYMAN AIRPARK (CCG3 - AERODROME - Reg)	Lat: 46.038	Long: -66.859	25.741KM	13.9NM	SW
FREDERICTON (RCMP) (CRC2 - HELIPORT - Reg)	Lat: 45.932	Long: -66.667	26.326KM	14.21NM	S
FREDERICTON INTL (CYFC - AERODROME/HELIPORT - Cert)	Lat: 45.869	Long: -66.537	32.497KM	17.55NM	S
GAGETOWN (CYCX - HELIPORT - DND)	Lat: 45.838	Long: -66.437	37.369KM	20.18NM	S

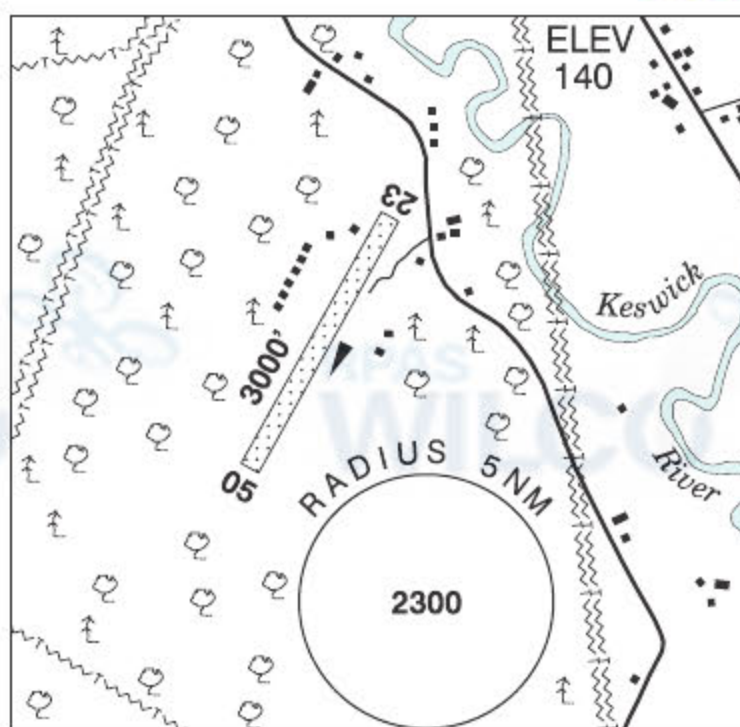
NEW BRUNSWICK

AERODROME/FACILITY DIRECTORY

WEYMAN AIRPARK NB

CCG3

REF	N46 02 15 W66 51 32 17°W (2015) UTC-4(3) Elev 140' A5003
OPR	David Bradley 506-450-4087 Reg PPR
PF	B-1 C-2 D-3,4,5,6
FLT PLN	
FIC	London 866-WXBRIEF (Toll free within Canada) or 866-541-4104 (Toll free within Canada & USA)
ACC	(IFR only) Moncton 506-867-7177 or 866-480-8200.
RWY DATA	Rwy 05/23 3000x80 SAND/GRVL/chip seal
RCR	Opr No win maint
COMM	
ATF	tfc 123.2 5NM 3100 ASL
CAUTION	Glider activity Apr 15-Dec 15. Rwy may be soft during thaw. Scottfield Airpark aprx 12NM W, ATF 123.2.



NEW BRUNSWICK

AERODROME/FACILITY DIRECTORY

FREDERICTON (RCMP) NB (Heli)

CRC2

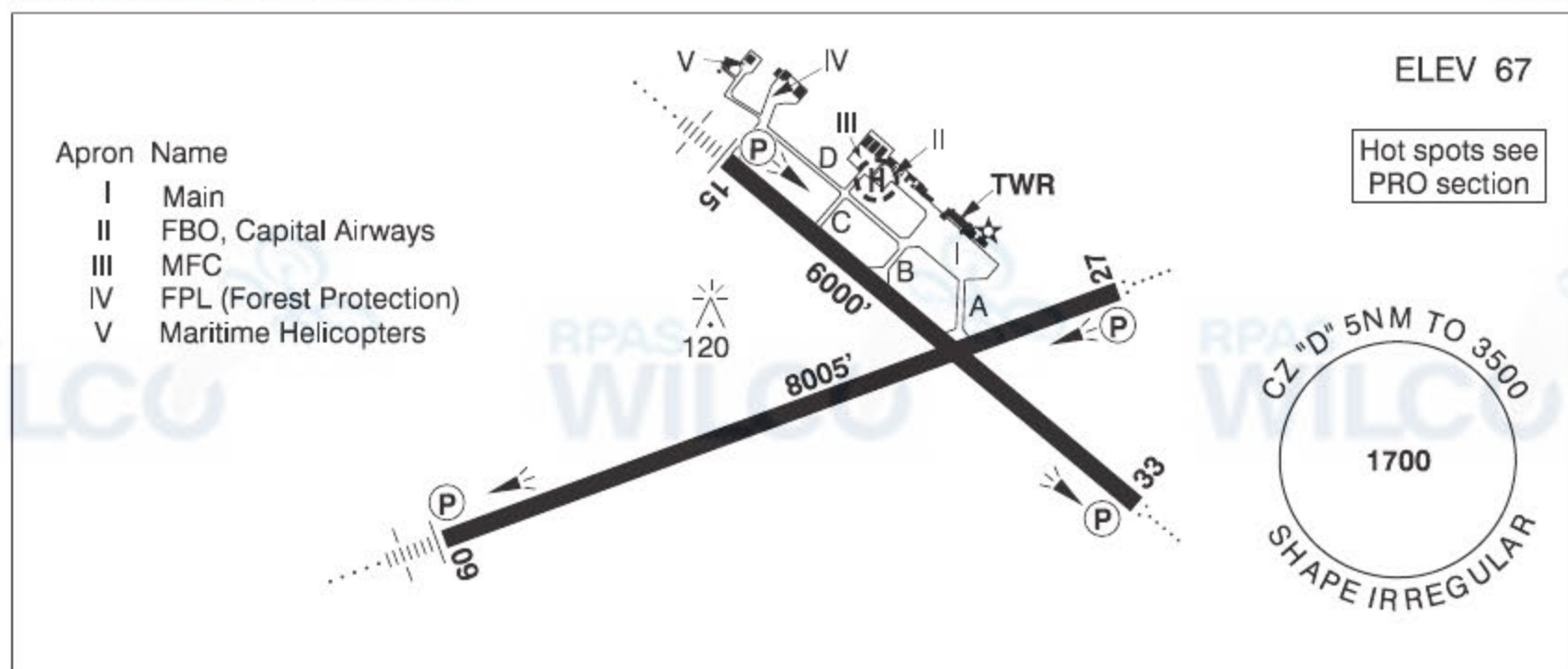
REF	N45 55 54 W66 40 00 Adj 18°W (2014) UTC-4(3) Elev 369' A5003	
OPR	RCMP 506-451-6050 Reg PPR	
FLT PLN		
FIC	London 866-WXBRIEF (Toll free within Canada) or 866-541-4104 (Toll free within Canada & USA)	
ACC	(IFR only) Moncton 506-867-7177 or 866-480-8200.	
HELI DATA	FATO/TLOF 77' x 77' ASPH	
LIGHTING	RF(FL) DR(LO) Arr/dep 150° fr heli	
COMM		
ATF	tfc 123.2 5NM 3400 ASL excluding Fredericton Intl CZ	
PRO	Arr/dep 150° & 313° fr heli. Ctc Fredericton TWR 119.0 1045-0345Z ‡ O/T Saint John rdo 119.0 prior to arr/dep to advise intentions.	

NEW BRUNSWICK

AERODROME/FACILITY DIRECTORY

FREDERICTON INTL NB

CYFC



REF	N45 52 08 W66 32 14 7SE 18°W (2014) UTC-4(3) Elev 67' A5003 LO8 HI6 CAP OC
OPR	Fredericton International Airport Authority Inc. 506-460-0920 0915-0515Z† Cert
PF	A-1,2,3,6(0900-0400Z†) C-4,5
CUST	AOE/55 (140 with staged off-loading) 12-04Z† 888-226-7277
FLT PLN	<p>FIG London 866-WXBRIEF (Toll free within Canada) or 866-541-4104 (Toll free within Canada & USA)</p> <p>ACC (IFR only) Moncton 506-867-7177 or 866-480-8200.</p> <p>WX METAR AUTO H24 WxCam TAF H24, issue times: 00, 06, 12, 18Z.</p>
SERVICES	<p>Call out chg may be levied for one or more svcs</p> <p>FUEL 100LL, JA-1 (FSII avbl), F-34, IP, HPR</p> <p>OIL 15W50, BP 2380</p> <p>S 1,2,3,4,5,6 Capital Airways</p> <p>ARFF DESIGNATED CAT 6 (CAT 7 4 hr PN) 0915-0515Z†</p> <p>JASU Elect Start 10/15 Capital Airways</p> <p>PVT ADV Capital Airways Inc. 122.87 506-446-3588 Fax 506-446-3589 Mon-Fri 12-22Z† Sat-Sun 13-21Z† O/T 506-238-3653 PN call out chg. Air Canada Ground Handling 130.375 506-446-6133</p> <p>MIL CON Irving Oil Commercial G.P 1-506-470-2320</p>
RWY DATA	Rwy 09(087°)/27(267°) 8005x200 ASPH Rwy 15(148°)/33(328°) 6000x150 ASPH
RWY CERT	Rwy 09 RVR 1200(1/4 sm)/Rwy 27 RVR 1200(1/4 sm) AGN V Rwy 15 RVR 1200(1/4 sm)/Rwy 33 RVR 1200(1/4 sm) AGN V
TWY CERT	Twy C AGN II Twy D AGN IIIB
TWY	Twy C uncontrolled NE of Twy D
HELI DATA	Parking Pad: 60' dia ASPH Max heli overall length 49'
RCR	Opr CRFI, win maint 0915-0400Z† PN for extended svc. PLR/PCN
LIGHTING	09-AN(TE HI) P2, 27-AO(TE HI) P2, 15-AN(TE HI) P2, 33-AO(TE HI) P2 ARCAL-119.0 type K (when twr closed)

NEW BRUNSWICK

AERODROME/FACILITY DIRECTORY

FREDERICTON INTL NB (Cont'd)

CYFC

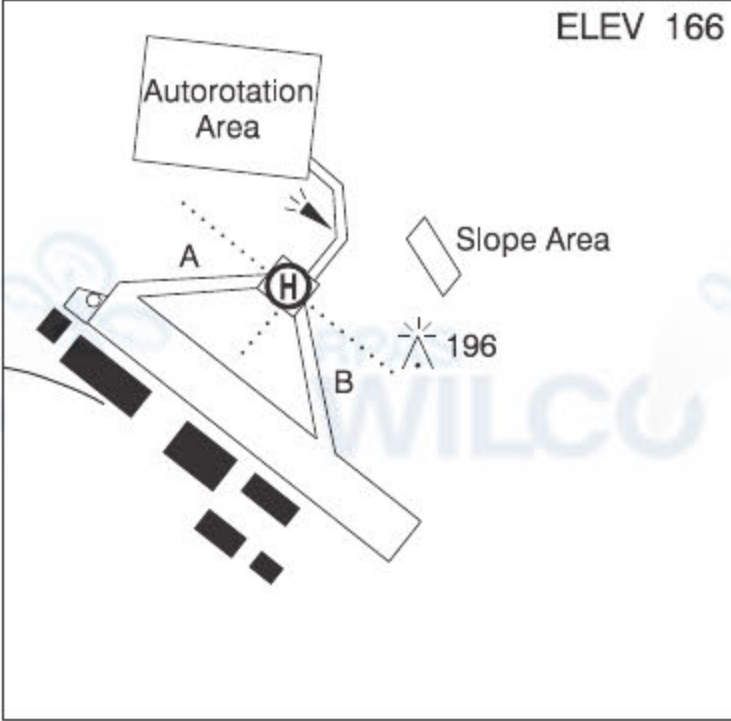
COMM	<p>RCO Saint John rdo 119.0 PTC avbl (RAAS) 0345-1045Z† (emerg only 506-646-7223)</p> <p>ATIS 127.55 1045-0345Z† (O/T AWOS)</p> <p>GND 121.7 1045-0345Z†</p> <p>TWR 119.0 (E) 1045-0345Z† (emerg only 506-446-3420)</p> <p>MF Saint John rdo 119.0 0345-1045Z† 5NM 3500 ASL (CAR 602.98)</p> <p>PAL Moncton Ctr 124.3 135.5 270.8</p>
NAV	<p>DME IDC 111.3 Ch 50 N45 51 47 W66 32 52 (86')</p> <p>ILS IDC 111.3 (Rwy 09) RVR LOC reliable only within 10° either side of centreline.</p>
PRO	<p>Dep Rwy 15 turn as soon as practicable after tkof to remain clear of CYR724. Transponder MODE C required within the Fredericton CZ. Pilots should refer to Canadian Airport Charts (CAC) to obtain details on established hot spots, prior to operating on maneuvering areas. CAC are available for free on the NAV CANADA website. VFR ARR/DEP ROUTES: See FREDERICTON VTPC - TRAINING AREAS</p>
CAUTION	<p>RESTRICTED AREAS: Extv live firing in CYR724, 725 4NM SE of aprt. AIRSPACE: Gagetown Class "E" CZ 3.5NM SE to 3500 ASL.</p>

NEW BRUNSWICK

AERODROME/FACILITY DIRECTORY

GAGETOWN NB (Heli)

CYCX

REF	N45 50 16 W66 26 12 5SE 16°W (2022) UTC-4(3) Elev 166' A5003		ELEV 166
OPR	DND 506-422-2394 CSN 319-432-2394 Mil PPR		
FLT PLN	<p>FIC London 866-WXBRIEF (Toll free within Canada) or 866-541-4104 (Toll free within Canada & USA)</p> <p>ACC (IFR only) Moncton 506-867-7177 or 866-480-8200.</p> <p>MIL on site Ltd hrs</p> <p>WX Met brief for mil only. Lcl Met Section CSN 432-2613, JMC 1-800-WXMETEO (996-3836). (See COMM). METAR during mil flt ops. TAF dur mil flt ops, issue times depending on mil requirements.</p>		
PF	B-1 C-2,3,4,5		
SERVICES	403 Sqn svcg call "FIVE" 321.8 ltd hrs Mon-Fri exc hols		
FUEL	F-34		
OIL	156		
ARFF	CAT 2		
MIL ADV	403 Sqn Ops call "WOLF OPS" 321.8 ltd hrs Mon-Fri exc hols		
HELI DATA	150' x 150' Ctr of Pad N45 50.2 W66 26.2 Twy A 094°. Twy B 011°.		
LIGHTING	DR RY(HI) Non std		
COMM	<p>MF 126.4 263.3 (E) Gagetown advsy avbl 11Z-0300Z† Mon-Fri O/T ltd hrs. Opr dates & hrs may vary without notice</p> <p>PAL Moncton Ctr 124.3 135.5 270.8</p> <p>MIL 46.8FM call sign Flt Following ltd hrs 49.9FM call sign Rng Ctl</p>		
PRO	Over flt of built up area 1.0NM W of heli proh below 1000 AGL Autorotation area lctd 0.5NM NNE of helipad. Circuits for helipad are left hand or opposite to Autorotation circuit when Autorotation area active. Autorotation area only active when MFAU open. Due to close proximity to Fredericton Intl, Transit thru Burton Bridge for CYCX arr only, not auth for dep fr CYCX to CYFC. For transit to Rwy 27 at CYFC acft are to transit to the ammunition storage area (N45 51.05 W066 20.43). For transit to Rwy 09 at CYFC acft are to transit to the North Y (N45 49.05 W066 24.86). For VFR practice approach COPTER RNAV (GNSS) 249, published missed approach not authorized. Crews are to contact Mtc Ctr (124.3) prior to commencing the VFR practice approach for traffic advisories and monitor CYFC Twr (119.0) during the VFR practice approach.		
CAUTION	<p>HELI TRAFFIC: Extv heli activity around Gagetown day & night.</p> <p>RESTRICTED AREAS: Live firing in CYR 724 & CYR 725. Unless specifically authorized remain clear.</p> <p>JET TRAFFIC: Presence of mil jet acft in the range often unannounced. Unsked dly radiosonde balloon launches with an ascent rate of 1000 ft/min in the vic of Heli.</p>		

Canadian Aviation Regulations

Division III — General Operating and Flight Rules

For full listing please visit : <https://laws-lois.justice.gc.ca/eng/regulations/SOR-96-433/FullText.html#s-901.27>

Visual Line-of-sight

- **901.11 (1)** Subject to subsection (2), no pilot shall operate a remotely piloted aircraft system unless the pilot or a visual observer has the aircraft in visual line-of-sight at all times during flight.
- **(2)** A pilot may operate a remotely piloted aircraft system without the pilot or a visual observer having the aircraft in visual line-of-sight if the operation is conducted in accordance with a special flight operations certificate — RPAS issued under section 903.03.

Procedures

- **901.23 (1)** No pilot shall operate a remotely piloted aircraft system unless the following procedures are established:
 - **(a)** normal operating procedures, including pre-flight, take-off, launch, approach, landing and recovery procedures; and
 - **(b)** emergency procedures, including with respect to
 - **(i)** a control station failure,
 - **(ii)** an equipment failure,
 - **(iii)** a failure of the remotely piloted aircraft,
 - **(iv)** a loss of the command and control link,
 - **(v)** a fly-away, and
 - **(vi)** flight termination.
- **(2)** If the manufacturer of the remotely piloted aircraft system provides instructions with respect to the topics referred to in paragraphs (1)(a) and (b), the procedures established under subsection (1) shall reflect those instructions.
- **(3)** No pilot shall conduct the take-off or launch of a remotely piloted aircraft unless the procedures referred to in subsection (1) are reviewed before the flight by, and are immediately available to, each crew member.
- **(4)** No pilot shall operate a remotely piloted aircraft system unless the operation is conducted in accordance with the procedures referred to in subsection (1).

Site Survey

901.27 No pilot shall operate a remotely piloted aircraft system unless, before commencing operations, they determine that the site for take-off, launch, landing or recovery is suitable for the proposed operation by conducting a site survey that takes into account the following factors:

- **(a)** the boundaries of the area of operation;
- **(b)** the type of airspace and the applicable regulatory requirements;
- **(c)** the altitudes and routes to be used on the approach to and departure from the area of operation;
- **(d)** the proximity of manned aircraft operations;
- **(e)** the proximity of aerodromes, airports and heliports;
- **(f)** the location and height of obstacles, including wires, masts, buildings, cell phone towers and wind turbines;
- **(g)** the predominant weather and environmental conditions for the area of operation; and
- **(h)** the horizontal distances from persons not involved in the operation.

Operations at or in the Vicinity of an Aerodrome, Airport or Heliport

- **901.47 (1)** No pilot shall operate a remotely piloted aircraft at or near an aerodrome that is listed in the *Canada Flight Supplement* or the *Water Aerodrome Supplement* in a manner that could interfere with an aircraft operating in the established traffic pattern.
- **(2)** Subject to section 901.73, no pilot shall operate a remotely piloted aircraft at a distance of less than
 - **(a)** three nautical miles from the centre of an airport; and
 - **(b)** one nautical mile from the centre of a heliport.
- **(3)** No pilot shall operate a remotely piloted aircraft at a distance of less than three nautical miles from the centre of an aerodrome operated under the authority of the Minister of National Defence unless the operation is conducted in accordance with a special flight operations certificate — RPAS issued under section 903.03.

Records

- **901.48 (1)** Every owner of a remotely piloted aircraft system shall keep the following records:
 - **(a)** a record containing the names of the pilots and other crew members who are involved in each flight and, in respect of the system, the time of each flight or series of flights; and
 - **(b)** a record containing the particulars of any mandatory action and any other maintenance action, modification or repair performed on the system, including
 - **(i)** the names of the persons who performed them,
 - **(ii)** the dates they were undertaken,
 - **(iii)** in the case of a modification, the manufacturer, model and a description of the part or equipment installed to modify the system, and
 - **(iv)** if applicable, any instructions provided to complete the work.
- **(2)** Every owner of a remotely piloted aircraft system shall ensure that the records referred to in subsection (1) are made available to the Minister on request and are retained for a period of
 - **(a)** in the case of the records referred to in paragraph (1)(a), 12 months after the day on which they are created; and
 - **(b)** in the case of the records referred to in paragraph (1)(b), 24 months after the day on which they are created.
- **(3)** Every owner of a remotely piloted aircraft system who transfers ownership of the system to another person shall, at the time of transfer, also deliver to that person all of the records referred to in paragraph (1)(b).